

GFRC CLADDING SYSTEMS, LLC

Baylor Cancer Center
Dallas, Texas



GLASS FIBER REINFORCED CONCRETE

Strong, lightweight, durable and versatile — a great solution
for a wide range of building types and applications.

Benefits of GFRC



Harrah's Hotel
New Orleans, Louisiana



Chicago Art Institute
Chicago, Illinois



Ameristar Casino Hotel
Black Hawk, Colorado

DESIGN

- Unlimited design freedom and flexibility for a wide variety of panel shapes and profiles
- Ability to design building skin with fewer joints and sharper corner, edge and return conditions
- Accurate facsimile of precast, natural stone and terra cotta at a fraction of the weight
- Available in a wide range of colors and finishes
- More uniform panel color and texture than precast
- LEED qualified with inherent sustainable design features

COST

- Lighter panels result in significant cost savings by designing the building with a lighter frame and foundation
- Fast-Track Construction results in savings in time and money
- Lighter hoisting equipment required for installation
- Lower building maintenance costs
- Lower insurance costs over the life cycle of the building with inherent fire- and mold-resistant qualities

VALUE

Performance and quality at a high level can be expected from the GFRC Cladding Systems team involved with your project. From concept to completion, each of the functions GFRC Cladding Systems performs for your project is managed by a professional and experienced staff.

Design/build approach to construction is a team method of delivering the construction process to the end user in the most time- and cost-efficient manner. Early consultation, and being part of the team during the design development phase of the project, allows our customers to take full advantage of our knowledge and experience and to utilize our products in the best possible application.

Client Services

PRECONSTRUCTION

- Color and texture matching with sample panels (10" x 10")
- Technical support and design assistance
- Budget proposals and unit pricing
- Structural design coordination — panel support, sizing and joint locations
- Office visits, lunch and learn presentations, and plant tours

BID EXECUTION

- Drawing reviews and take-offs
- Value engineering analysis and recommendations
- Crane/hoisting recommendations
- Detailed lump sum proposals on 100% complete drawings
- Scope review

PROJECT MANAGEMENT

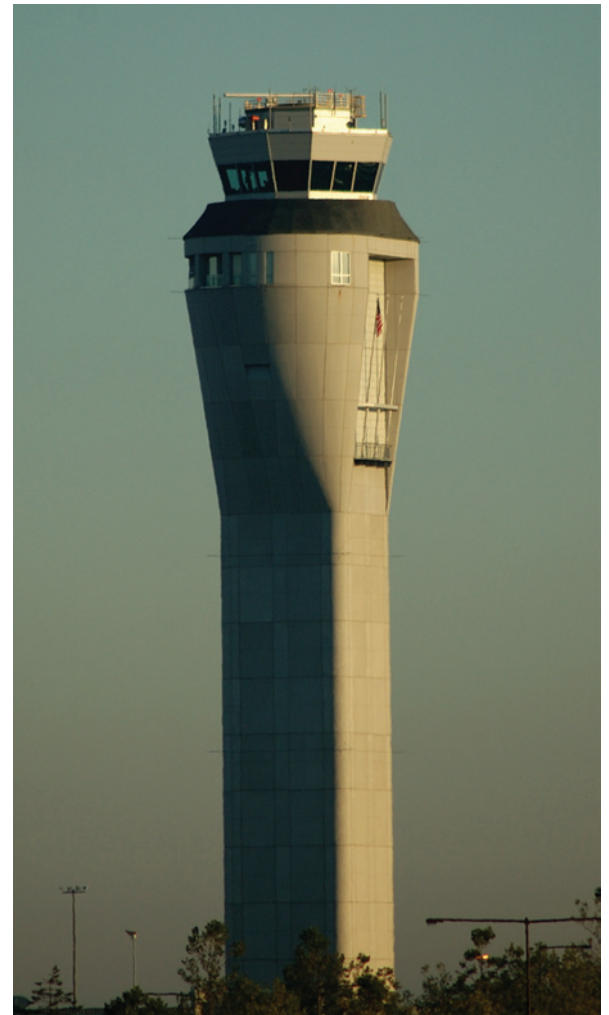
- Contract review and execution
- Panel design and detailing
- PE approved and stamped shop drawings
- Sample approvals and mockups
- Project management support
- Panel installation, patching and cleaning



Our company has been recognized by PCI for meeting the high standards required to hold PCI certification.



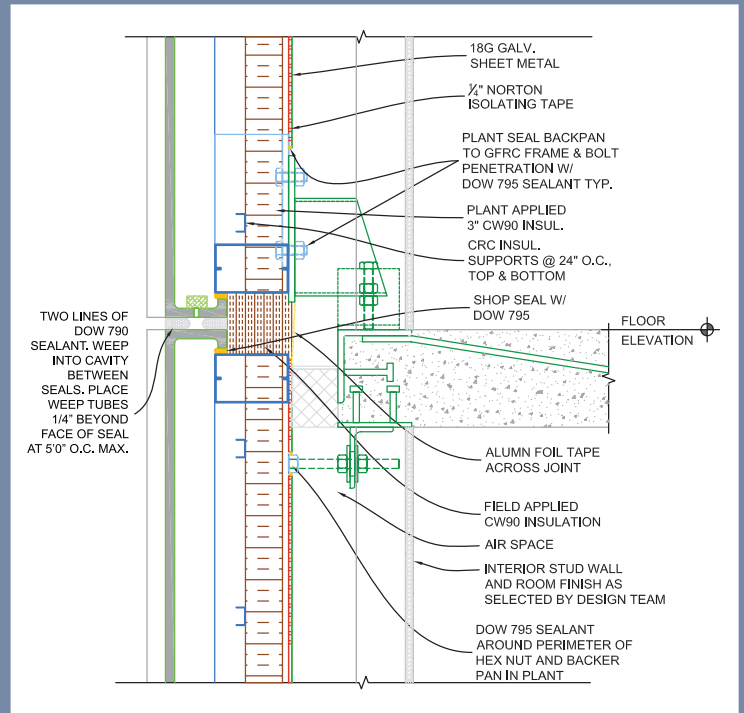
Radial Coffered Ceiling - Mississippi State University
Starkville, Mississippi



Sea-Tac Air Traffic Control Tower
SeaTac, Washington



Ameristar Casino Hotel
Black Hawk, Colorado



Featuring our Unitized Panel System



Portsmouth Judicial Center - Manufactured with our Rainscreen Frameless GFRG Panels
Portsmouth, Virginia

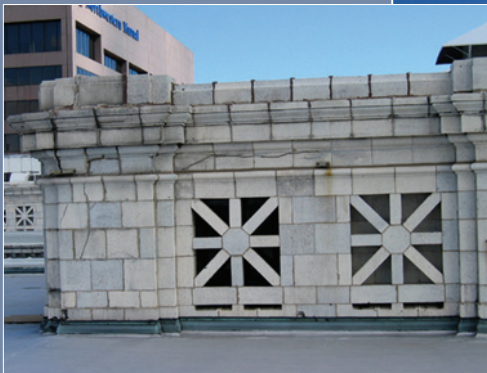


Framed GFRG Panels - Bank First Financial
Madison, Mississippi



After

Before



Northwest Mutual Life Insurance Headquarters - Terra Cotta Replication
Milwaukee, Wisconsin



GFRC Dome - Shorewood Village Hall
Shorewood, Illinois



Miami Children's Hospital
Miami, Florida



Westchester County Courthouse - Largest GFRC reclad in the US at the time: 220,000 square feet
Westchester County, New York



Children's Medical Center - Levels 7-12 Vertical Addition
Dallas, Texas



House of Blues
Atlantic City, New Jersey



Baylor Cancer Center
Dallas, Texas



MD Anderson - Eleven Story Vertical Expansion
Houston, Texas

Relationships with our clients are built on our commitment to provide a high quality finished product that achieves the appearance and functionality envisioned by the owners and architects. We strongly believe solid, long-term relationships are invaluable and are the foundation for mutually successful projects.

GFRC CLADDING SYSTEMS, LLC

118 North Shiloh Road, Garland, Texas 75042
Office: 972-494-9000 • Fax: 972-494-1900
gfrcladding.com • sales3@gfrc.us